

ACS



ACS: Assemblies for Construction Sites

The ACS series are units intended for equipping work sites and temporary workplaces where activities such as building, installation and repair are carried out.

These panels adapt perfectly to market needs, complying with the UNE-EN 61439-4 standard (Low voltage switchgear and controlgear assemblies for construction sites).

The panels are supplied with the sockets assembled and wired, with protections provided to order, and with all the necessary safety elements to obtain the CE conformity certificate for the unit.

Manufactured according to UNE-EN 61439-4 standard (Low-voltage switchgear and controlgear assemblies for construction sites)



ACS Technical Specifications (In metal enclosure)

- **Degree of protection of the unit:** IP65.
In metal enclosure: IP65.
In interlocking and Schuko-type sockets: IP67.
In the emergency push button: IP65.
- **Resistance to impact:** IK10.
- **Glow wire resistance:**
In power sockets: 960 °C.
- **Ambient temperature range:** -25 °C / +40 °C.
- **Maximum operating voltage:** 1000 V AC/1500 V DC.

ACS Technical Specifications (In plastic enclosure)

- **Degree of protection of the unit:** IP65.
In Pryma enclosure: IP67.
In Star enclosure: IP65.
In interlocking and Schuko-type sockets: IP67.
In the emergency push button: IP65.
- **Resistance to impact:** IK08.
- **Glow wire resistance:**
In the enclosure: 650 °C.
In power sockets: 960 °C.
- **Ball pressure test:**
In the enclosure: 70 °C.
In power sockets: 125 °C.
- **Ambient temperature range:** -25 °C / +40 °C.
- **Maximum operating voltage:** 1000 V AC/1500 V DC.
- **Double insulation:** Class II.

ACS Certificates



Compliant with the Low Voltage Directive 2014/35/EU.
Standards: UNE-EN 61439-1 and UNE-EN 61439-4
(in the specific requirements for ACS).
According to instruction ICT-BT-33 of the REBT 2002
(Low Voltage Electricity Regulation).

ACS functions

- Electric power supply.
- Distribution.
- Transformation
- Compatible units.

Maximum safety in the event of power cuts and contingencies by means of a minimum voltage coil

STEP 1

Normal site operation

CONSEQUENCE: incident-free work.



STEP 2

Unannounced power cut

CONSEQUENCE: The machines stop working and work is temporarily interrupted.

SAFETY ACTION: The MCB is automatically tripped.



STEP 3

The power is restored without notice

CONSEQUENCE: The panel has to be manually reset, the machines are still off and there is no risk of incidents.

SAFETY ACTION:

The MCB is still in the tripped position.



STEP 4

The power is restored intentionally, making sure that there is no risk of accident

CONSEQUENCE:

Work continues, with no risk of an accident.



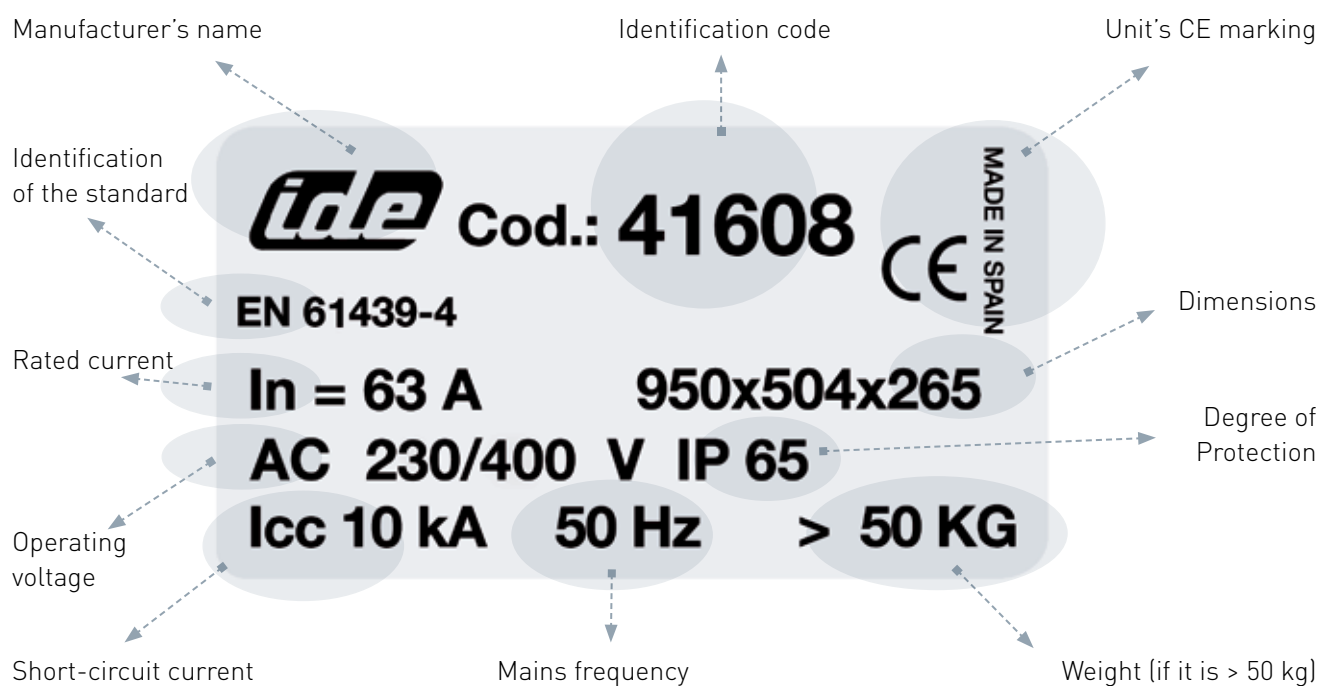
Documentation

Documentation supplied with the product:

- Certificate of conformity.
- Data sheet endorsing the individual tests performed.
- Technical data sheet that includes:
 - Technical characteristics of the unit.
 - Description and number of power sockets and protections.
 - Single-line diagram.
 - Assembly instructions.



Rating label





Product series

- There are four predetermined models, with space reserved for the main circuit breaker (MCB), a layout for 48, 64, 96 or 104 modules, and an area reserved for power sockets with space for up to 20 combined sockets.

Material

Metal enclosure:

- Cold-rolled steel EN 10130+A1.
- Coated with hardened RAL 7035 embossed polyester paint, with UV protection.
- Corrosion resistance according to the UNE-EN 62208 standard.
- Specific coating treatments can be applied to order, to increase the degree of corrosion resistance to reach the C5-H classification.

Power sockets:

- Plastic parts, polyamide 6.
- Contacts, copper-zinc alloy.
- Halogen-free plastic materials.

Supply

- Supplied in individual cardboard packaging. They are supplied completely assembled according to the specifications of each reference.

Intended for equipping work sites and temporary workplaces (building, installation, repair, etc.)

Connection cables

The conductors used in the standard wiring are made of H07VK-type flexible copper, with TI-1-type flame-retardant PVC coating according to the UNE 50525-3 standard. The rated voltage is 450/750 V. These conductors are halogen-free and flame-retardant, according to the IEC 332-1 definition. All the cables are connected with tips that are either electro-welded or with connection terminals. The cable section and standard colour code used in the power sockets installed by IDE are described in the following table:

Base	Current (A)	L1	L2	L3	N	T
2P+E lat.	10 / 16	2,5	2,5			2,5
2P+E		2,5	2,5			2,5
3P+E	16	4	4	4		4
3P+N+E		4	4	4	4	4
2P+E	32	6	6			6
3P+E		6	6	6		6
3P+N+E		6	6	6	6	6
2P+E	63	16	16			16
3P+E		16	16	16		16
3P+N+E		16	16	16	16	16
2P+E	125	35	35			16
3P+E		35	35	35		16
3P+N+E		35	35	35	16	16



- The panels are supplied with a modular frame, with capacity for 48, 64, 96 or 104 modules, depending on the model.
- The smaller models COM706020 and COM808020 have modular frames with capacity for 48 and 96 modules.
- The larger models COM1208020 and COM12012020 are supplied with a modular frame on one side and a plate for attachment of the main circuit breaker on the other side. The main circuit breaker can be 125-630 A and the base busbar can be 160-630 A. There exists the option to replace this lid with a modular frame.
- The attachment plate for the main circuit breaker is depth-adjustable so that moulded-case circuit breakers from different manufacturers can be installed. The busbar is attached to the base of the cabinet by insulated M6 bolts and methacrylate plates.
- The steel cabinets have two upper doors that open horizontally; with models COM706020 and COM808020 this gives access to the modular frame, and with models COM1208020 and COM12012020 it gives access to the modular frame, the lid of the main circuit breaker and the busbar.
- They have a vertically opening lower door supported by retainers. The door is for accommodating the industrial sockets, for all of which the degree of protection is IP67. These doors can take up to 20 sockets, depending on the models and combinations.
- Ability to install 63 A crane-type sockets in the cabinet's sides.
- 140x80 mm lower cable entry lid and IP65 emergency stop button with closed contact as standard for all models.
- Wall-mounting bracket included in the set (pack of four).



ACS in steel enclosure

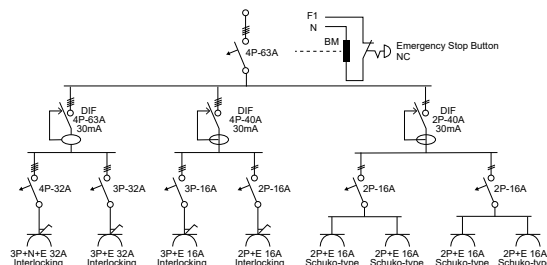


CAPACITY: 4x12 (48) DIN rail modules.
DIMENSIONS: 700x600x200 mm.
 IP65 degree of protection of the unit.
 Colour RAL 7035.
 Weight: <50 kg.

* Emergency stop button supplied with closed contact.

Other combinations are possible.

Reference No.	Unit	Description	Components			
			IP	Poles	I (A)	Voltage (V)
COM706020/BMP	1	Steel cabinet 700x600x200	66	-	-	-
	1	Flush-fit socket with interlocking switch	67	3P+N+E	32	380/415
	1	Flush-fit socket with interlocking switch	67	3P+E	32	380/415
	1	Flush-fit socket with interlocking switch	67	3P+E	16	380/415
	1	Flush-fit socket with interlocking switch	67	2P+E	16	200/250
	4	Schuko-type sockets	67	2P+E	16	250
	1	Emergency stop button + trim*	65	-	-	-

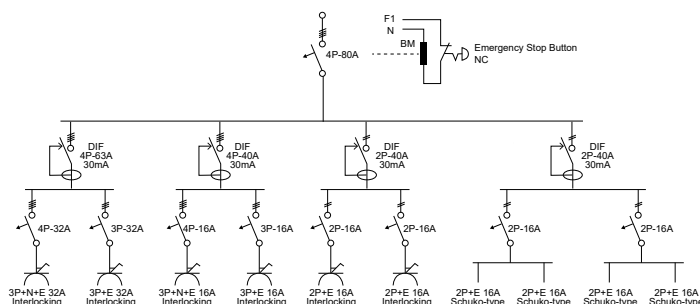


CAPACITY: 6x16 (96) DIN rail modules.
DIMENSIONS: 800x800x200 mm.
 IP65 degree of protection of the unit.
 Colour RAL 7035.
 Weight: <80 kg.

* Emergency stop button supplied with closed contact.

Other combinations are possible.

Reference No.	Unit	Description	Components			
			IP	Poles	I (A)	Voltage (V)
COM808020/BMP	1	Steel cabinet 800x800x200	66	-	-	-
	1	Flush-fit socket with interlocking switch	67	3P+N+E	32	380/415
	1	Flush-fit socket with interlocking switch	67	3P+E	32	380/415
	1	Flush-fit socket with interlocking switch	67	3P+N+E	16	380/415
	1	Flush-fit socket with interlocking switch	67	3P+E	16	380/415
	2	Flush-fit sockets with interlocking switch	67	2P+E	16	200/250
	4	Schuko-type sockets	67	2P+E	16	250
	1	Emergency stop button + trim*	65	-	-	-



PROTECTIVE MEASURES

Protection from electric shocks and protective circuit integrity

- The panels are supplied with an MCB and the other necessary CBs depending on the power sockets used.
- The CBs have a current of 16 to 125 A and 2, 3 and 4 poles.
- Each socket or group of sockets is protected by a residual current circuit breaker (RCCB) with a maximum rated current of 30 mA.



Emergency stop button

- The emergency stop button is connected in parallel. It is controlled by an undervoltage coil, associated with the MCB, and can be used to cut off the power supply to the panel in the event of an emergency. The advantage of this coil is that it will trip the MCB in the event of a power cut, in which case the panel will have to be manually reset. This is a very important safety feature, since it prevents the panel from powering up unexpectedly if the power is restored, thus avoiding dangerous situations.



Connection cables

- The conductors used in the standard wiring are made of H07VK-type flexible copper, with TI-1-type flame-retardant PVC coating according to the UNE EN 50525-3 standard. The rated voltage is 450/750 V. These conductors are halogen-free and flame-retardant, according to the IEC 332-1 definition. All the cables are connected with tips that are either electro-welded or with connection terminals.



Documentation

- Certificate of conformity with its serial number.
- Technical data sheet verifying type and individual tests.
- Technical data sheet that includes:
 - Technical characteristics of the unit.
 - Description and number of power sockets and protections.
 - Single-line diagram.
 - Assembly instructions.



Special assemblies



Empty panel.

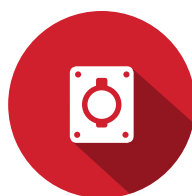


Panel with assembled and wired power sockets and protections.

How to proceed



1. SELECT THE CABINET.



2. CHOOSE THE POWER SOCKETS.



3. INDICATE THE REQUIRED PROTECTION.



4. SUBMIT ALL THE INFORMATION TO OUR TECHNICAL DEPARTMENT.

You can request a quotation and technical assessment at export@ide.es

Any assembly combination can be supplied, with no minimum order quantity

Proposal of sockets for metal panels

IP67 SCHUKO-TYPE FLUSH-FIT SOCKETS



REF.	Poles	I	Voltage
00105	2P+E	16 A	250 V

IP67 FLUSH-FIT INTERLOCKING SOCKETS



REF.	Poles	I	Voltage
02811	2P+E	16 A	200/250 V
03812	3P+E	16 A	380/415 V
03813	3P+N+E	16 A	200/415 V
02814	2P+E	32 A	200/250 V
03815	3P+E	32 A	380/415 V
03816	3P+N+E	32 A	200/415 V

IP67 SURFACE INTERLOCKING SOCKETS



REF.	Poles	I	Voltage
03882	3P+E	63 A	200/415V
03883	3P+N+E	63 A	200/415 V

Please see our full range of sockets and plugs on page 294



Product series

Plastic panels:

- Models in Pryma IP67 enclosure: 26-39-52 and 56-module capacity with transparent window.
- Models in Star IP65 enclosure: 24-30 and 46-module capacity with transparent window.
- Any assembly combination is possible, with interlocking sockets assembled and wired, IP67 Schuko-type sockets, protections and emergency push-button.
Single-phase from 16 to 63 A.
Triple-phase from 16 to 125 A.

Materials

- Plastic materials:

Halogen-free.
Body: ABS RAL 7035.
Transparent window: PC tinted window, with UV protection.

Supply

- They are supplied completely assembled according to the specifications of each reference, protected with shrinkwrapped plastic and placed in multiple cardboard packaging, depending on the number of units ordered.

Intended for equipping work sites and temporary workplaces (building, installation, repair, etc.)

Connection cables

The conductors used in the standard wiring are made of H07VK-type flexible copper, with TI-1-type flame-retardant PVC coating according to the UNE EN 50525-3 standard. The rated voltage is 450/750 V. These conductors are halogen-free and flame-retardant, according to the IEC 332-1 definition. All the cables are connected with tips that are either electro-welded or with connection terminals. The cable section and standard colour code used in the power sockets installed by IDE are described in the following table:

Base	Current (A)	L1	L2	L3	N	T
2P+E lat.	10 / 16	2,5	2,5			2,5
2P+E		2,5	2,5			2,5
3P+E	16	4	4	4		4
3P+N+E		4	4	4	4	4
2P+E		6	6			6
3P+E	32	6	6	6		6
3P+N+E		6	6	6	6	6
2P+E		16	16			16
3P+E	63	16	16	16		16
3P+N+E		16	16	16	16	16
2P+E		35	35			16
3P+E	125	35	35	35		16
3P+N+E		35	35	35	16	16



- Multiple possibilities for ACS on Pryma IP67 enclosures or on Star IP65 enclosures.
- All the ACS have an IP65 degree of protection overall.
- The enclosures are joined by means of a watertight bushing that maintains the degree of protection.
- They are supplied with assembled and wired interlocking sockets, to which the power can be cut individually, and an emergency push-button to deactivate the unit in the event of an emergency.
- They can be ordered with IP67 Schuko-type sockets and with the protections assembled.
- All the panels have a CE certificate.

Protection from electric shocks and protective circuit integrity

- The panels are supplied with an MCB and the other necessary CBs depending on the power sockets used.
- The CBs have a current of 16 to 125 A and 2, 3 and 4 poles.
- Each socket or group of sockets is protected by a residual current circuit breaker (RCCB) with a maximum rated current of 30 mA. One RCCB can protect a maximum of six power sockets.

Emergency stop button

- The emergency stop button is connected in parallel. It is controlled by a coil, associated with the MCB, and can be used to cut off the power supply to the panel in the event of an emergency. The advantage of this coil is that it will trip the MCB in the event of a power cut, in which case the panel will have to be manually reset. This is a very important safety feature, since it prevents the panel from powering up unexpectedly if the power is restored, thus avoiding dangerous situations.
- All panels are supplied with a closed contact emergency stop button (NO contacts can be supplied to order).
- The emergency stop button has IP65 protection.



Complementary safety measures

- The power sockets, except for the Schuko-type sockets, have an interlocking switch with the possibility of locking in the open position.
- Panels in Pryma enclosures are supplied with a padlock for the windows and the protection devices.
- Panels in Star enclosures are supplied with a security key for the windows and the protection devices.

Supports and mounting

- The panels can be mounted directly on the wall using the mounting rails, which in turn make the unit extremely robust.
- By means of a metal support, adaptable to the two types of panels, Pryma and Star, supplied as an accessory (Ref. 48205 or 48206).
- Directly to the mast, with the mast attachment pack that is supplied as an accessory (Ref. 48420).

PRYMA Site Panels



SINGLE-PHASE 40A with Schuko-type sockets and protections.

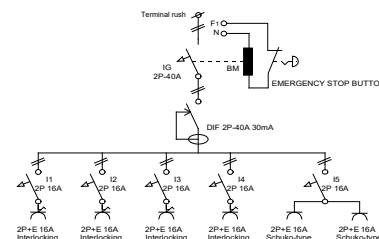
DIMENSIONS: 650x504x265 mm.

WEIGHT: <15 kg. 26 modules.

IP65 Protection.

* Emergency stop button supplied with closed contact.

Reference No.	Unit Description		Components			
			IP	Poles	I (A)	Voltage (V)
COM40PR67/P	2	13-modules box	67	-	-	-
	4	Flush-fit sockets with interlocking switch	67	2P+E	16	220/250
	2	Schuko-type sockets	67	2P+E	16	250
	1	Emergency stop button + trim*	65	-	-	-



TRIPLE-PHASE 63A with protections.

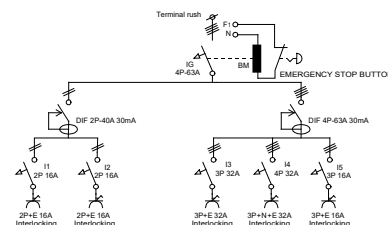
DIMENSIONS: 650x504x265 mm.

WEIGHT: <15 kg. 26 modules.

IP65 Protection.

* Emergency stop button supplied with closed contact.

Reference No.	Unit Description		Components			
			IP	Poles	I (A)	Voltage (V)
COT63PR/P+	2	13-modules box	67	-	-	-
	2	Flush-fit sockets with interlocking switch	67	2P+E	16	220/250
	1	Flush-fit socket with interlocking switch	67	3P+E	16	380/415
	1	Flush-fit socket with interlocking switch	67	3P+E	32	380/415
	1	Flush-fit socket with interlocking switch	67	3P+N+E	32	380/415
	1	Emergency stop button + trim*	65	-	-	-



TRIPLE-PHASE 125A with protections.

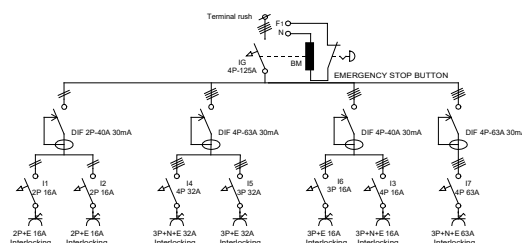
DIMENSIONS: 1100x504x265 mm.

WEIGHT: <30 kg. 43 modules.

IP65 Protection.

* Emergency stop button supplied with closed contact.

Reference No.	Unit Description		Components			
			IP	Poles	I (A)	Voltage (V)
COT125PR/P	3	13-modules box	67	-	-	-
	1	Surface interlocking socket; 4 modules	55	3P+N+E	63	240/415
	2	Flush-fit sockets with interlocking switch	67	2P+E	16	220/250
	1	Flush-fit socket with interlocking switch	67	3P+E	16	380/415
	1	Flush-fit socket with interlocking switch	67	3P+E	32	380/415
	1	Flush-fit socket with interlocking switch	67	3P+N+E	16	380/415
	1	Flush-fit socket with interlocking switch	67	3P+N+E	32	380/415
	1	Emergency stop button + trim*	65	-	-	-



Special assemblies



Empty boxes.



Boxes with assembled and wired power sockets.



Boxes with assembled and wired power sockets and protections.

How to proceed



1. SELECT THE
NUMBER OF
BOXES.



2. CHOOSE
THE POWER
SOCKETS.



3. INDICATE
THE REQUIRED
PROTECTION.



4. SUBMIT ALL THE
INFORMATION TO OUR
TECHNICAL DEPARTMENT.

You can request a quotation and technical assessment at export@ide.es

Any assembly combination can be supplied, with no minimum order quantity

Proposal of sockets for Pryma boxes

IP67 SCHUKO-TYPE FLUSH-FIT SOCKETS



REF.	Poles	I	Voltage
00105	2P+E	16 A	250 V

IP67 FLUSH-FIT INTERLOCKING SOCKETS



REF.	Poles	I	Voltage
02811	2P+E	16 A	200/250 V
03812	3P+E	16 A	380/415 V
03813	3P+N+E	16 A	200/415 V
02814	2P+E	32 A	200/250 V
03815	3P+E	32 A	380/415 V
03816	3P+N+E	32 A	200/415 V

IP67 SURFACE INTERLOCKING SOCKETS



REF.	Poles	I	Voltage
03882	3P+E	63 A	200/415 V
03883	3P+N+E	63 A	200/415 V

Please see our full range of sockets and plugs on page 294

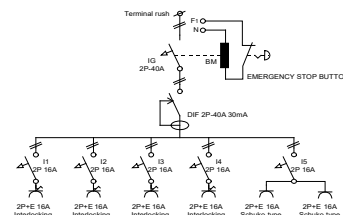
STAR Site Panels



SINGLE-PHASE 40A with Schuko-type sockets and protections.
DIMENSIONS: 690x436x210 mm.
WEIGHT: <15 kg. 24 modules.
 IP65 Protection.

* Emergency stop button supplied with closed contact.

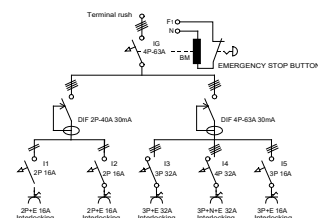
Reference No.	Components					
	Unit	Description	IP	Poles	I (A)	Voltage (V)
COM40ST67/P	2	12-modules box	65	-	-	-
	4	Flush-fit sockets with interlocking switch	67	2P+E	16	220/250
	2	Schuko-type sockets	67	2P+E	16	250
	1	Emergency stop button + trim*	65	-	-	-



TRIPLE-PHASE 63A with protections.
DIMENSIONS: 800x436x210 mm.
WEIGHT: <15 kg. 30 modules.
 IP65 Protection.

* Emergency stop button supplied with closed contact.

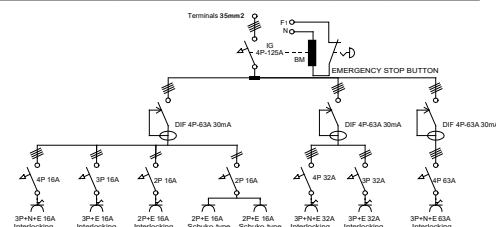
Reference No.	Components					
	Unit	Description	IP	Poles	I (A)	Voltage (V)
COT63ST/P+	1	12-modules box	65	-	-	-
	1	18-modules box				
	2	Flush-fit sockets with interlocking switch	67	2P+E	16	220/250
	1	Flush-fit socket with interlocking switch	67	3P+E	16	380/415
	1	Flush-fit socket with interlocking switch	67	3P+E	32	380/415
	1	Flush-fit socket with interlocking switch	67	3P+N+E	32	380/415
	1	Emergency stop button + trim*	65	-	-	-



TRIPLE-PHASE 125A with protections.
DIMENSIONS: 1300x436x210 mm.
WEIGHT: <30 kg. 46 modules.
 IP65 Protection.

* Emergency stop button supplied with closed contact.

Reference No.	Components					
	Unit	Description	IP	Poles	I (A)	Voltage (V)
COT125ST/P	2	12-modules box	65	-	-	-
	1	18-modules box				
	1	Surface interlocking socket; 4 modules	55	3P+N+E	63	380/415
	1	Flush-fit socket with interlocking switch	67	2P+E	16	220/250
	1	Flush-fit socket with interlocking switch	67	3P+E	16	380/415
	1	Flush-fit socket with interlocking switch	67	3P+N+E	16	380/415
	1	Flush-fit socket with interlocking switch	67	3P+E	32	380/415
	1	Flush-fit socket with interlocking switch	67	3P+N+E	32	380/415
	2	Schuko-type sockets	67	2P+E	16	250
	1	Emergency stop button + trim*	65	-	-	-



Special assemblies



Empty boxes.



Boxes with assembled and wired power sockets.

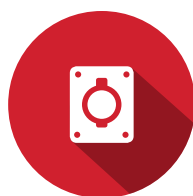


Boxes with assembled and wired power sockets and protections.

How to proceed



1. SELECT THE
NUMBER OF
BOXES.



2. CHOOSE
THE POWER
SOCKETS.



3. INDICATE
THE REQUIRED
PROTECTION.



4. SUBMIT ALL THE
INFORMATION TO OUR
TECHNICAL DEPARTMENT.

You can request a quotation and technical assessment at export@ide.es

Any assembly combination can be supplied, with no minimum order quantity

Proposal of sockets for Star boxes

IP67 SCHUKO-TYPE FLUSH-FIT SOCKETS



REF.	Poles	I	Voltage
00105	2P+E	16 A	250 V

IP67 FLUSH-FIT INTERLOCKING SOCKETS



REF.	Poles	I	Voltage
02811	2P+E	16 A	200/250 V
03812	3P+E	16 A	380/415 V
03813	3P+N+E	16 A	200/415 V
02814	2P+E	32 A	200/250 V
03815	3P+E	32 A	380/415 V
03816	3P+N+E	32 A	200/415 V

IP67 SURFACE INTERLOCKING SOCKETS



REF.	Poles	I	Voltage
03882	3P+E	63 A	200/415 V
03883	3P+N+E	63 A	200/415 V

Please see our full range of sockets and plugs on page 294

ACS Accessories



Reference No.	Description	Poles	I (A)	Voltage (V)
00114	IP67 Schuko-type plug	2P+E	16	220/230



Ref. 77670

Ref. 92150

Reference No.	Description
77670	Support for padlock (PRYMA series)
92150	Security lock with key (STAR series)

Ref. 77670 does not include the padlock.
For panels in plastic enclosure.



Reference No.	Description
92580	M25 cable gland
92582	M32 cable gland
92584	M40 cable gland



Reference No.	Description
92581	M25 cable gland nut
92583	M32 cable gland nut
92585	M40 cable gland nut



Reference No.	Description
94273	M25 bushing
94274	M40 bushing

For panels in plastic enclosure.



Ref. 48206

Ref. 48205

Reference No.	Description
48205	Metal support for secondary panels
48206	Metal support for plastic site panels (2 legs)
48214	Support for Ref. COM706020 - COM808020
48215	Support for Ref. COM1208020 - COM12012020



Ref. 48214 and 48215



Reference No.	Description
48210	Canopy 970x400 mm
48211	Canopy 1350x400 mm

Leg support not included (Ref. 48206).
For panels in plastic enclosure.

ACS Accessories



Reference No.	Description
---------------	-------------

48220	Compact protective cabinet 1020x700x360 mm
48221	Compact protective cabinet 1400x700x360 mm

Protective cabinet only for STAR site panels.



Reference No.	Description
---------------	-------------

48423	Galvanised wall-mounting support (4-piece pack)
-------	---

MATERIAL: Galvanised steel.

CHARACTERISTICS: They are attached to the rear part of the cabinet vertically or horizontally. 11-mm wall separation. Maximum horizontal or vertical load: 490 kg. For panels in metal enclosure.



Reference No.	Description
---------------	-------------

48422	Inner hook fitting (4-piece pack)
-------	-----------------------------------

MATERIAL: Galvanised steel.

CHARACTERISTICS: Inner fixing support for screwing in the hangers from the outside of the cabinet. For panels in metal enclosure.



Reference No.	Description
---------------	-------------

48475	M12 Lifting eyebolts (2-piece pack)
-------	-------------------------------------

MATERIAL: Galvanised steel.

CHARACTERISTICS: They are fitted at the top of the cabinet using M12 nuts. They cannot be assembled if there is a canopy in place. For panels in metal enclosure.



Reference No.	Description
---------------	-------------

48456	1P 1/4 turn lock with key code 333
-------	------------------------------------

CHARACTERISTICS: Housing manufactured in RAL 7037 polyamide and latch in steel. Aluminium key with code 333 included (1 pc.). (Ref. 48550 for spare). For panels in metal enclosure.