

# PRYMA



## IP67 Boxes for industrial sockets

The PRYMA series comprises a set of enclosures for surface installation, manufactured with halogen-free high-durability plastic materials intended to house power sockets or control and signalling elements.

They are intended for installation in places requiring power points for fixed machinery, portable tools or auxiliary electrical equipment.

Their sphere of application therefore includes industrial premises, workshops, warehouses, depot areas, building sites, etc., or any place requiring a high degree of protection and safety.



### PRYMA Technical Specifications

- Degree of protection: IP67.
- Resistance to impact: IK08.
- Glow wire resistance: 650 °C.
- Ball pressure test: 70 °C.
- Ambient temperature range: -25 °C / +40 °C.
- Maximum operating voltage: 1000 V AC/1500 V DC.
- Double insulation: Class II.

### PRYMA Certifications



Compliant with the Low Voltage Directive 2014/35/EU.  
Standards: UNE-EN 62208 and UNE-EN 61439-1  
(as applicable).

Watertight enclosures for installation of industrial power sockets

# PRYMA

## IP67 boxes for industrial sockets



### Product series

---

- Surface enclosures with a capacity of 9, 13 and 26 modules with transparent window.

### Material

---

- Halogen-free plastic materials.
- Body: ABS RAL 7035.
- Transparent window: PC tinted window, with UV protection.

### Supply

---

- Supplied in individual cardboard packaging. When several items are sent together, they are bundled together with transparent film.
- The enclosure is supplied with the windows assembled on the cover and the hinges attached to the base, leaving the cover totally free for handling by the installer.
- The rails are supplied assembled to the base for the 9-module models. For the 13- and 26-module models they are supplied disassembled in a bag containing the rail, supports and screws.
- Accessory bag:
  - 11x13 plastic screws.
  - Grey module cover (6 modules).
  - Module identification strips.
  - Hermetic caps (Ref. No. 67TC13 and 67TC26).
  - Assembly instructions.

Intended for the industrial sector, where a high degree of safety and maximum protection are required

### DIN rail attachment

---

- The rail can be attached to the enclosure in two different positions: to the base or to the cover.

#### Attachment of rail to cover:

- Types 67TC09, 67TC13 and 67TC26: two supports are screwed to the cover, and the DIN rail is then screwed onto the supports.

#### Attachment of rail to base:

- Type 67TC09: by pressing the rail gently into two grooved housings. These boxes are supplied with the rail assembled on the base.

- Types 67TC13 and 67TC26: two supports are screwed to the base and the DIN rail is then screwed onto the supports. The DIN rail can be placed at two different heights, offering the possibility of fitting elements from 53 mm to 70 mm for the first position and 92 mm for the second one. The boxes are supplied with the bag of accessories required for installation.



## Base

- It has four completely flat walls, permitting the installation of small elements such as pilot lights, pushbuttons, etc.
- The side walls have vertical ribs on the inside that provide rigidity to protect against possible deformation.
- The top and bottom sides are also flat, with three pre-marked points that can be used as a reference for inserting the trunking pipe.
- The bottom of the base is fitted with supports for attaching neutral and earth bars, as well as the housings for attaching the DIN rail.
- The base has raised lines with different housings for fixing mounting plates, rails, bars, etc.

## Wall-mounting

- The 67TC09 type boxes are secured to the wall by means of screws placed in the locking screw housings on the enclosure.
- Types 67TC13 and 67TC26 are mounted directly from the housings located on the base for this purpose. These housings are covered with watertight caps (supplied in the accessories bag) to maintain the degree of protection and dielectric strength.

## Frame

- The frame is used for placing the power sockets. It has a vertical blank area and another one with a 30° inclination to facilitate base installation and to prevent cable bundles from crossing.
- The frame perimeter has a sealing gasket to guarantee protection from dust and water.
- The inside of the frame has reinforcement ribs to guarantee the part's rigidity.
- The frame-base assembly is closed by means of 11×23 plastic pan-head and flat-tip screws (supplied in the accessory bag).
- The boxes can be sealed at two points.



## Window

- Transparent tinted windows with UV protection.
- The window presses against the sealing gasket to guarantee the assembly's IP protection.
- The window opens vertically and is closed by means of two threaded screws.
- Possibility of support with padlock supplied as an accessory (Ref. 77670).

## Frame-base hinge system

- This series has a frame-base hinge system that enhances manoeuvrability between both parts, guaranteeing an opening of 180°.
- The hinges' high resistance means that when the base is secured to the wall, the frame can be left hanging even if it has been totally installed with sockets or with equipment.
- The unit is assembled and disassembled by gently pressing on the ends of the part, which is symmetrical and reversible.

# PRYMA

## IP67 boxes for industrial sockets

### IP67 wall-mounted enclosures for power sockets

Reference No.	No. of modules	Dimensions	Weight	Power dissipation according to temperature increase °C P(W)*					Type
				HEIGHT	WIDTH	X	DEPTH	KG	
178P	1x9 DIN rail	284x222x122	1.21	13.2	16.5	19.8	23.1	26.4	67TC09
178M	1x9 DIN rail	369x222x130	1.38	16.9	21.1	25.4	29.6	33.8	67TC09M
1712GM	1x13 DIN rail	504x297x177	2.76	31.1	38.8	46.6	54.4	62.1	67TC13
1724GM	2x13(26) DIN rail	504x297x177	2.84	31.1	38.8	46.6	54.4	62.1	67TC26

#### HALOGEN-FREE PLASTIC MATERIALS

Frame and base in ABS RAL 7035 grey.  
 PC transparent window, tinted with UV protection.  
 IP67 - Surface.

\* Calculations obtained according to the CEI 890:1997 standard (including Corrigendum 1998). Method of temperature-rise assessment by extrapolation for partially type-tested assemblies (PTTA) of low-voltage switchgear and control gear.



1x9 modules  
178P



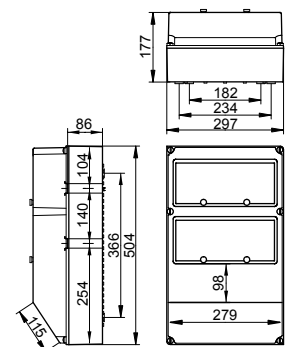
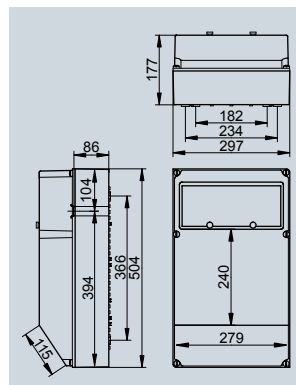
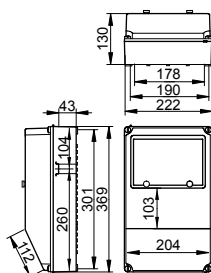
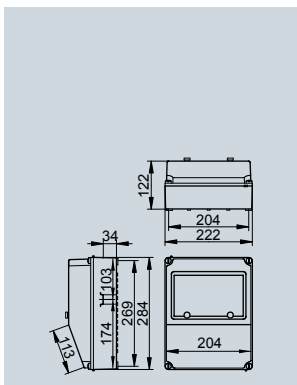
1x9 modules  
178M



1x13 modules  
1712GM



2x13 (26) modules  
1724GM



## IP67 wall-mounted enclosures for power sockets. With neutral and earth bars

Reference No.	No. of modules	Dimensions	Weight	Power dissipation according to temperature increase °C P(W)*					Type
				HEIGHTXWIDTHXDEPTH	KG	20	25	30	
178P/RR	1x9 DIN rail	284x222x122	1.30	13.2	16.5	19.8	23.1	26.4	67TC09
178M/RR	1x9 DIN rail	369x222x130	1.46	16.9	21.1	25.4	29.6	33.8	67TC09M
1712GM/RR	1x13 DIN rail	504x297x177	2.87	31.1	38.8	46.6	54.4	62.1	67TC13
1724GM/RR	2x13 (26) DIN rail	504x297x177	3.12	31.1	38.8	46.6	54.4	62.1	67TC26

### HALOGEN-FREE PLASTIC MATERIALS

Frame and base in ABS RAL 7035 grey.

PC transparent window, tinted with UV protection.

IP67 - Surface.

/RR: With neutral and earth bars.

\* Calculations obtained according to the CEI 890:1997 standard (including Corrigendum 1998). Method of temperature-rise assessment by extrapolation for partially type-tested assemblies (PTTA) of low-voltage switchgear and control gear.

They are intended for places requiring power points for fixed machinery, portable tools or auxiliary electrical equipment

# PRYMA COMPLET

IP67 boxes for industrial sockets

## Special assemblies



Plain boxes.



Boxes with assembled and wired power sockets.



Boxes with assembled and wired power sockets and protections.

## How to proceed



1. SELECT THE BOX.



2. CHOOSE THE POWER SOCKETS.



3. INDICATE THE REQUIRED PROTECTION.



4. SUBMIT ALL THE INFORMATION TO OUR TECHNICAL DEPARTMENT.

You can request a quotation and technical assessment at [export@ide.es](mailto:export@ide.es)

Special assemblies with power sockets can be supplied in any combination, assembled and wired, with no minimum order quantity

## Proposal of sockets for Pryma Complet boxes

### IP67 SCHUKO-TYPE FLUSH-FIT SOCKETS



REF.	Poles	I	Voltage
00105	2P+E	16A	250 V

### IP67 FLUSH-FIT SOCKETS



REF.	Poles	I	Voltage
02801	2P+E	16 A	200/250 V
03802	3P+E	16 A	380/415 V
03803	3P+N+E	16 A	200/415 V
02804	2P+E	32 A	200/250 V
03805	3P+E	32 A	380/415 V
03806	3P+N+E	32 A	200/415 V

See our standard assemblies on page 260, and our full range of plugs and sockets on page 294

## PRYMA Accessories



SUPPORT FOR  
PADLOCK.

BOX HANDLE  
FOR MOBILE  
INSTALLATIONS.

INSULATING BAR  
SUPPORT.

METAL SUPPORT (FOR  
ANY BOX SIZE).

CABLE GLAND AND  
CABLE GLAND NUT.

## Neutral and earth bar structure

Ref.	Terminal		Cable section	
	N	E	NEUTRAL	EARTH
22007	4+2	4+2	2x(4-10 mm <sup>2</sup> )+4x(2.5-6 mm <sup>2</sup> )	2x(4-10 mm <sup>2</sup> )+4x(2.5-6 mm <sup>2</sup> )
22008	8+2	8+2	1x(10-25 mm <sup>2</sup> )+1x(4-10 mm <sup>2</sup> )+8x(2.5-6 mm <sup>2</sup> )	1x(10-25 mm <sup>2</sup> )+1x(4-10 mm <sup>2</sup> )+8x(2.5-6 mm <sup>2</sup> )
22009	12+2	12+2	1x(10-25 mm <sup>2</sup> )+1x(4-10 mm <sup>2</sup> )+12x(2.5-6 mm <sup>2</sup> )	1x(10-25 mm <sup>2</sup> )+1x(4-10 mm <sup>2</sup> )+12x(2.5-6 mm <sup>2</sup> )

## Neutral and earth bars

In some markets, the technical regulations governing installation require neutral and earth conductors to be connected to a common busbar. The base of these boxes has specific supports for this purpose. The neutral and earth bars will be screwed to these supports, which are supplied as an accessory.

They can be supplied pre-assembled by ordering the /RR references.

### Accessories and screws

	Ref.
Box handle for mobile installations 140x40	92110
Box handle for mobile installations 110x35	92110/1
Frame fixing kit	94280
Support for padlock	77670
Metal support	48205
Rail support	77430
Grey module cover (6 modules)	77590
Hermetic caps	77650
2.9x16 screw for bar support	92620
Stainless steel screw (4x16)	94292
Plastic nut for power sockets	94293

### Neutral and earth bars

	Ref.
Support + neutral and earth bar (4+2 entries)	22007
Support + neutral and earth bar (8+2 entries)	22008
Support + neutral and earth bar (12+2 entries)	22009

### Bushings and cable glands

	Ref.
M25 bushing	94273
M40 bushing	94274
M25 cable gland	92580
M32 cable gland	92582
M40 cable gland	92584
M25 cable gland nut	92581
M32 cable gland nut	92583
M40 cable gland nut	92585

### Transparent windows

	Ref.
9 modules (92640 must be requested)	86020
13 modules (92640 must be requested)	86040
M4x15 screws for windows	92640