



OPERATOR PANEL ENCLOSURE



CHARACTERISTICS

Operator housing made from AISI304L satin stainless steel sheet metal and a ScotchBrite finish, shaped and welded on all sides.

Furnished with a solid hinged lid, complete with a panel-stopper, screwed on at the top for easy maintenance. Rounded stainless steel handles, which can be positioned either on the sides, the bottom or the curved sections of the operator housing.

SUPPLY

- Solid operator housing complete with lid and panel-stopper.
- Keyboard support supplied separately.
- Handles supplied separately.

PROTECTION RATING

- IP66 compliant with IEC EN62208; EN60529 (pending)
- IP69K compliant with DIN 40050-9
- NEMA 4X, compliant with UL508A and UL50 (pending)
- Protection rating ensured by the use of two-component silicone foam
- Impact resistance rating IK10, compliant with IEC EN62208 and EN62202.

To order the keyboard support, use the part of the housing code that indicates the width and add PTX to the end of the code (i.e. ERAM3-PTX = keyboard support for a 300 mm wide E RAM housing).

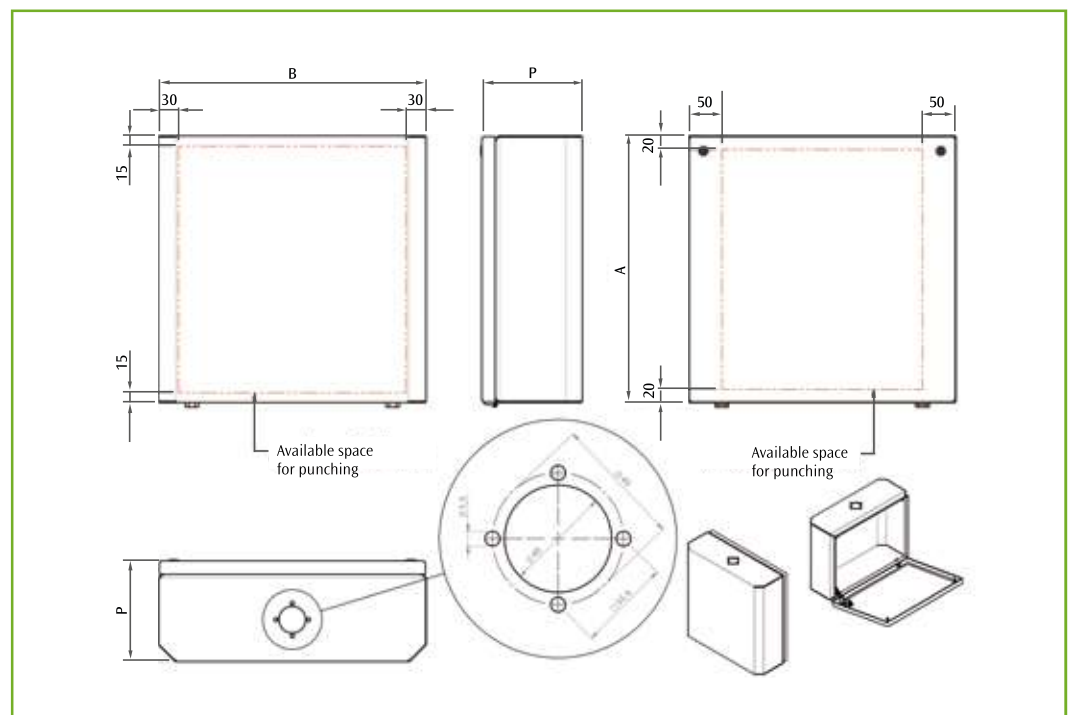
To order the version in AISI316L, add H to the end of the code (i.e. ERAM3-315XH).

CODE E RAM	OPERATOR HOUSING DIMENSIONS		
	B	A	P
ERAM3-315X	300	300	150
ERAM4-315X	400	300	150
ERAM4-415X	400	400	150
ERAM6-415X	600	400	150

OPTIONALS

Handle made from AISI304L stainless steel.

Package containing 2 pieces, complete with mounting accessories ERM-02 – L=200.



Stainless steel

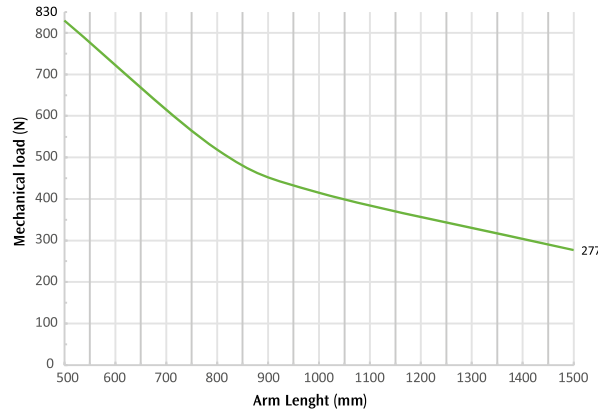
CHARACTERISTICS

Articulated single-piece support profiles, made from AISI304L stainless steel section and a satin finish.
External diameter 48.30 mm.

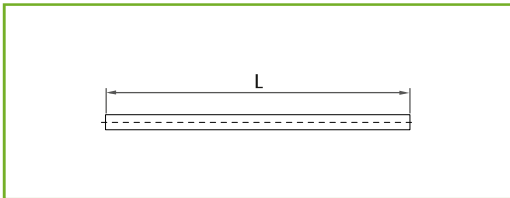
SUPPLY

- I, L, J, or S sections (upon request).
- Screws for fastening to the coupling elements supplied together with the relative couplings.

LOAD CAPACITY



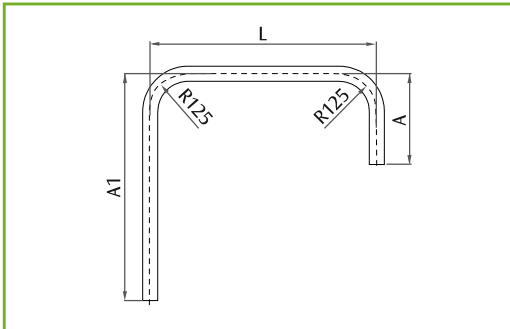
“I” VERSION



Your solution:
ERI-L
Min. L = 250 mm
Max. L = 1500 mm

CODE	L
ERI-0500X	500
ERI-0750X	750
ERI-1000X	1000

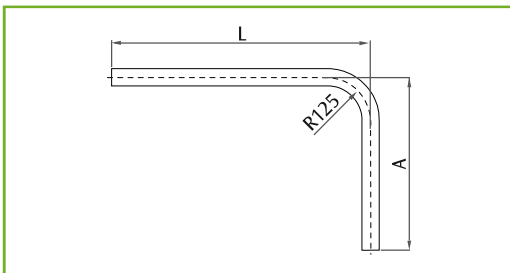
“J” VERSION



Your solution:
ERJ-A¹LA
Min. A¹ = 250 mm
Max. A¹ = 1000 mm
Min. L = 380 mm
Max. L = 1000 mm
Min. A = 250 mm
Max. A = 1000 mm

CODE	DIMENSIONS		
	A ¹	L	A
ERJ-030503X	300	500	300
ERJ-050503X	500	500	300
ERJ-070703X	750	750	300

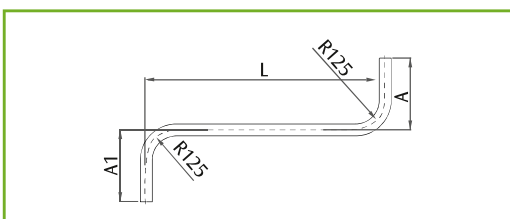
“L” VERSION



Your solution:
ERL-LA
Min. L = 250 mm
Max. L = 1000 mm
Min. A = 250 mm
Max. A = 1000 mm

CODE	DIMENSIONS	
	L	A
ERL-0305X	300	500
ERL-0505X	500	500
ERL-0705X	750	500

“S” VERSION



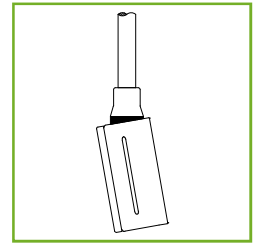
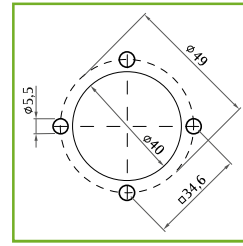
Your solution:
ERS-A¹LA
Min. A¹ = 250 mm
Max. A¹ = 1000 mm
Min. L = 380 mm
Max. L = 1000 mm
Min. A = 250 mm
Max. A = 1000 mm

Available upon request.

Stainless steel

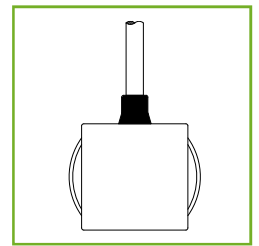
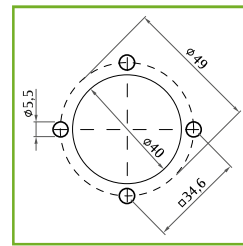
**FIXED 10° ANGLE FOR HOUSING
ERCF-010X**

Made from AIS303 stainless steel.
Complete with fastening screws.



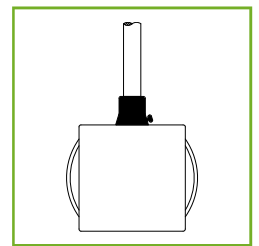
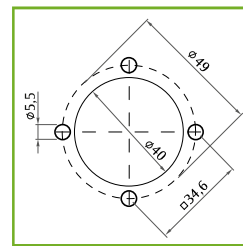
**FIXED ATTACHMENT FOR HOUSING
ERCF-001X**

Made from AIS303 stainless steel.
Complete with fastening screws.



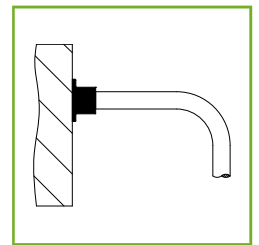
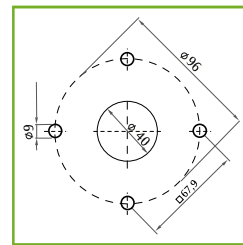
**SWIVEL ATTACHMENT FOR HOUSING
ERCG-001X**

Made from AIS303 stainless steel.
Complete with fastening screws and swivel locking system.



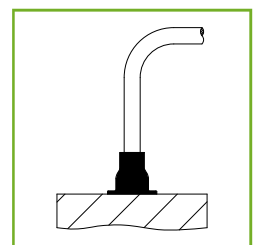
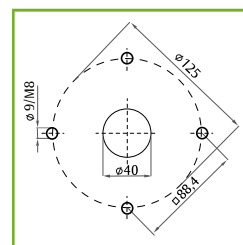
**FIXED WALL-MOUNTING BASE ATTACHMENT
ERPF-001X**

Made from AIS303 stainless steel.
Complete with fastening screws.



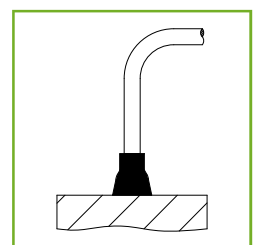
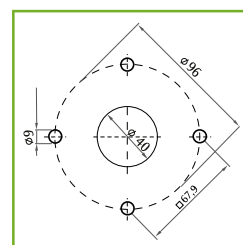
**SWIVEL WALL-MOUNTING BASE ATTACHMENT
ERPG-001XA**

Made from AIS303 stainless steel.
Complete with fastening screws and swivel locking system. Front fastening.



**SWIVEL WALL-MOUNTING BASE ATTACHMENT
ERPG-001XP**

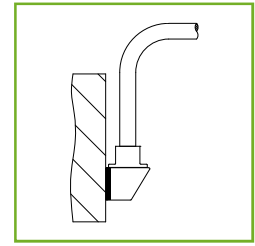
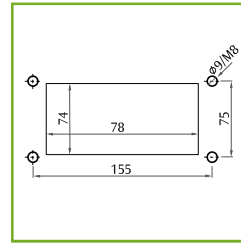
Made from AIS303 stainless steel.
Complete with fastening screws and swivel locking system. Rear fastening.



Stainless steel

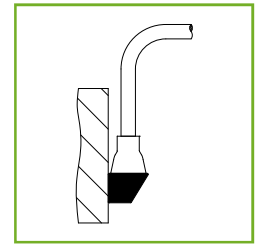
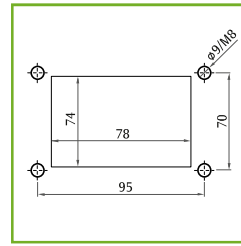
WALL-MOUNTING PLATE ERPS-001XA

Made from AIS304L stainless steel.
Allows for the wall-mounting of the base attachments. Front fastening.
To be combined with: ERPS-001XP (to be ordered separately).



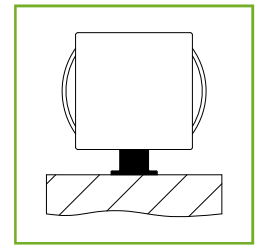
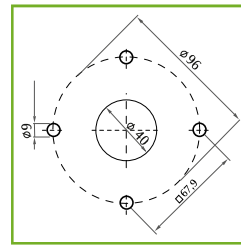
WALL-MOUNTING BRACKET ERPS-001XP

Made from AIS304L stainless steel.
Allows for the wall-mounting of the base attachments. Rear fastening.
To be combined with: ERPF-001X or ERPG-001XP.



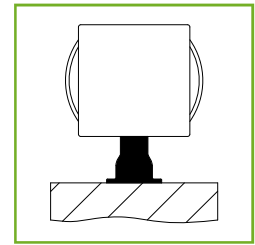
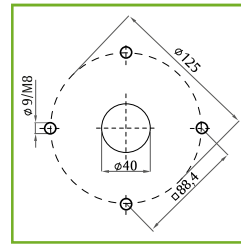
* FIXED DIRECT BASE ATTACHMENT ERDF-001X

Made from AIS303 stainless steel.
Complete with fastening screws.



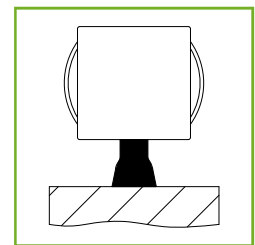
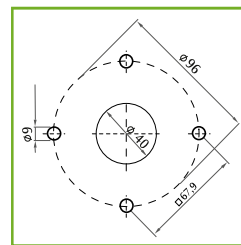
* SWIVEL DIRECT BASE ATTACHMENT ERDG-001XA

Made from AIS303 stainless steel.
Complete with fastening screws and swivel locking system. Front fastening.



* SWIVEL DIRECT BASE ATTACHMENT ERDG-001XP

Made from AIS303 stainless steel.
Complete with fastening screws and swivel locking system. Rear fastening.



Stainless steel

* For the container drilling template, please refer to the ERCF-001X.

TOGETHER, WE CAN CREATE THE IDEAL SYSTEM FOR YOU IN JUST A FEW SIMPLE STEPS

OPERATOR PANEL ENCLOSURE

1 - DIMENSIONS

<input type="checkbox"/> STANDARD				<input type="checkbox"/> SPECIAL		
E RAM CODE	HOUSING DIMENSIONS			DIMENSIONS ON REQUEST*		
	B	A	P	B	A	P
<input type="checkbox"/> ERAM3-315X	300	300	150			
<input type="checkbox"/> ERAM4-315X	400	300	150			
<input type="checkbox"/> ERAM4-415X	400	400	150			
<input type="checkbox"/> ERAM5-415X	600	400	150			

* Feasibility and m.o.q. to be checked with Sales team

2 - MATERIAL

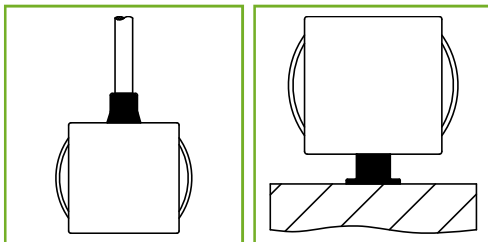
- AISI 304L AISI 316L

3 - PUNCHING FOR HMI

- None Customer drawing

4 - PUNCHING FOR JOINT AND SUSPENSION ARM SYSTEM

- ETA Standard ETA Standard None
 Customer drawing



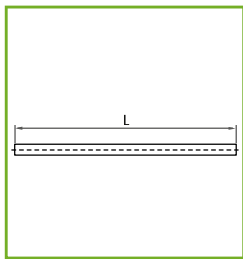
5 - ACCESSORIES

- ERM-002 handles (supply includes nr. 2 pieces) Keyboard shelf

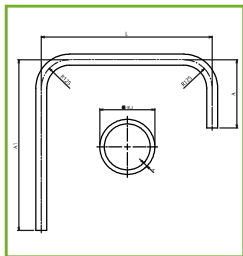
6 - FURTHER REQUIREMENTS, PUNCHINGS, ACCESSORIES

Stainless steel

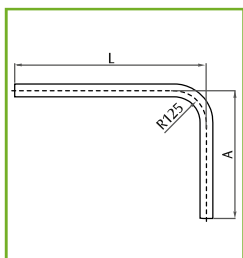
ARTICULATED SUPPORT ARM



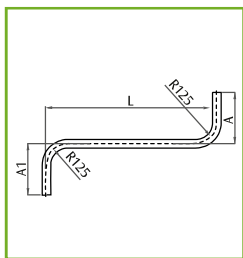
"I" VERSION		
CODE	L = min 250 - max 1.500	
<input type="checkbox"/> ERI-0500X	500	
<input type="checkbox"/> ERI-0750X	750	
<input type="checkbox"/> ERI-1000X	1.000	
<input type="checkbox"/> SPC		



"J" VERSION			
CODE	A1 = min 250 - max 1.000	L = min 380 - max 1.000	A = min 250 - max 1.000
<input type="checkbox"/> ERJ-030503X	300	500	300
<input type="checkbox"/> ERJ-050503X	500	500	300
<input type="checkbox"/> ERJ-070703X	750	750	300
<input type="checkbox"/> SPC			



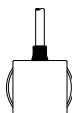
"L" VERSION		
CODE	L = min 250 - max 1.000	A = min 250 - max 1.000
<input type="checkbox"/> ERL-0305X	300	500
<input type="checkbox"/> ERL-0505X	500	500
<input type="checkbox"/> ERL-0705X	750	500
<input type="checkbox"/> SPC		



"S" VERSION			
CODE	A1 = min 250 - max 1.000	L = min 380 - max 1.000	A = min 250 - max 1.000
<input type="checkbox"/> ERS-030503X	300	500	300
<input type="checkbox"/> ERS-030703X	300	750	300
<input type="checkbox"/> ERS-031003X	300	1000	300
<input type="checkbox"/> SPC			

HOUSING

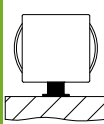
CHOOSE THE ELEMENT FOR THE HOUSING



- Fixing ERCF-001X
- Swivel ERGC-001X
- Swivel (rear fastening) ERCF-010X

Stainless steel

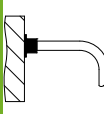
BASE ATTACHMENT



- Fixed ERDF-001X
- Swivel (front fastening) ERDG-001XA
- Swivel (rear fastening) ERDG-001XP

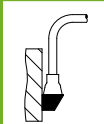
WALL-FIXING

CHOOSE THE ELEMENT FOR THE FIXING



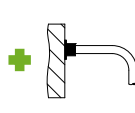
- Fixed ERPF-001X
- Swivel (front fastening) ERPG-001XA
- Swivel (rear fastening) ERPG-001XP

WALL-MOUNTING BRACKET



- Front fastening ERPS-001XA
- Rear fastening ERPS-001XP

WALL-FIXING



- Fixed ERPF-001
- Swivel with rear fastening ERPG-001XP