

KryosROOF

Roof mounted fans for electrical panels



New design, more flexibility

KryosRoof roof mounted fans are the ideal industrial ventilation solution for extracting warm air from the roof. Their **compact dimensions** allow them to be installed on various types of electrical panels, while the layout and fans ensure **high flow rates** and **operating efficiency**.

The TSF/TSV feature a new design, compact dimensions and the flexibility properties typical of Cosmotec products.



“Flexibility and efficiency
in a compact size”

Resistance

The top cover is made by galvanized sheet metal ensuring mechanical resistance. The base is made by ABS Blend, material that gives mechanical resistance, against the fire (with class V0) and to deterioration caused by sunshine rays, extending the product life.



FOCUS - Striving for energy efficiency

Energy efficiency prevents energy waste and generates savings that last. Rational use of energy and investment in energy-efficient technological solutions increase the profitability of operations and make them more competitive, modern and efficient. Improving the energy efficiency of production processes helps to reduce fixed production costs, increase the market value of the product and reduce environmental impact.

Modern technologies require more accurate temperature control and low energy consumption operation. These two features are now both available in the highly efficient KryosROOF fan.

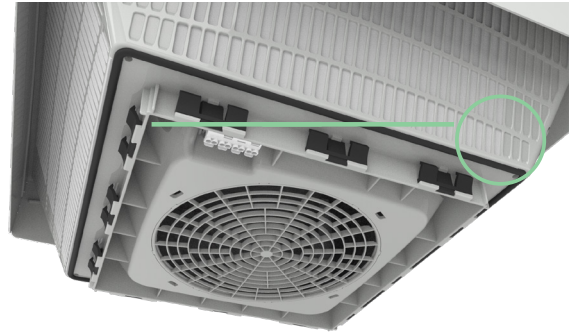
KryosROOF roof fans regulate the air flow optimally for each operating condition and heat load. The roof fan is equipped with an **EC fan** and an **active probe** to read the temperature value inside the cabinet and to adjust the fan speed. Drastic reductions in electricity consumption, up to more than 50%, can be achieved.



Est & Safe Installation

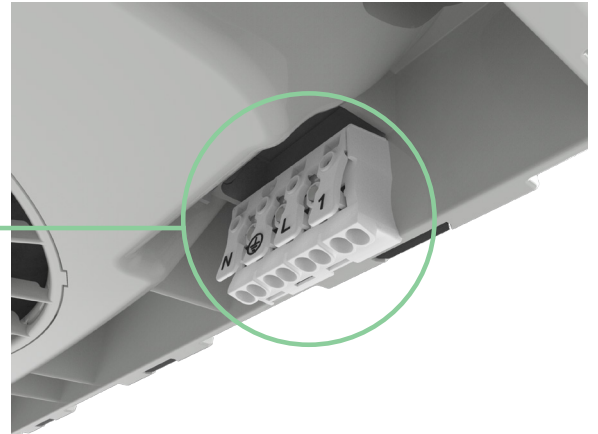
Installation

Easy to install without the use of tools or screws, thanks to the clips on the base, which, together with the gasket already installed, provide an adequate seal between the roof fan and the cabinet. The roof mounted fans can be installed on various types of enclosure with thicknesses between 0.8 and 3 mm; for greater thicknesses, fixing with screws is possible.



Electrical Connection

The electrical connection is quick and easy, thanks to the connection via a spring-loaded terminal block.



“For all your applications worldwide ”

The roof-mounted fans KryosROOF got several **certifications** that make them suitable for the world market, decreasing the installation cost for the manufacturers of the electrical enclosures and accelerating market access for the end users.

The integrated foam seal and the fixing clips guarantee a suitable seal between mounted-roof fan and the electrical enclosure, allowing protection against dust and splashing of water, with an **IP43 (Type1)** or **IP54 (Type12) protection degree**. The tests are certified by an external agency, who has so approved the protection degree.



Application Practice

Ventilation of the MV electrical enclosure

On the **electrical cabinet or cabinet MV** is needed eliminate a lot of heat load produced by internal components and can be necessary a forced ventilation. Moreover, in some applications the ventilation by filter fans can be not allowed or possible for installation.

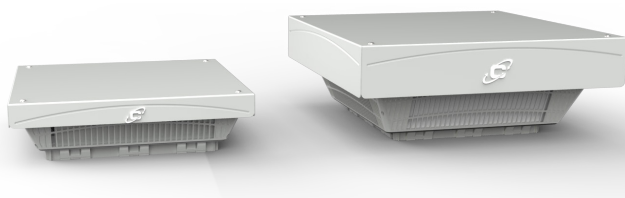
Cosmotec with the KryosROOF offer a roof-mounted fans range with **high air flow**, thanks to **high efficiency** radial fans. The KryosROOF ensure a suitable **protection degree (IP43/54, Type1/12)** allowing protection of the internal components against dust and splashing of water.



Technical Features

Main Features

- Air Flow: 500 m³/h ÷ 1870 m³/h
- Fastening system allows for tool-free installation
- High Efficiency
- Fans MTBF: 40.000 hours
- Protection Degree IP43/54 – Type1/12 (certified by an external agency)
- Fast Electrical Connection
- Integrated foam seal
- Top cover made by galvanized sheet metal to ensure robustness
- Resistance against UV sunshine rays
- Certifications: CE, EAC, UL Listed



Options

- Special Color (top cover)
- Stainless Steel 316 (top cover)

CODE	M.U.	TSF19	TSF25
Protection Degree	IP/Type	43/Type1 or 54/Type12	43/Type1 or 54/Type12
Height	mm	108	188
Width	mm	395	490
Depth	mm	395	490

CODE	M.U.	TSV19			TSV22			TSV25			TSV35
Nominal Voltage	V, ~	230, 1	115, 1	230, 1	115, 1	230, 1	115, 1	230, 1	115, 1	230, 1	
Nominal Frequency	Hz	50	60	50	60	50	60	50	60	50, 60	
Air Flow IP43/Type1		540	575	800	810	1425	1520	1470	1870		
Air Flow IP54/Type12		500	535	715	725	1365	1480	1420	1700		
Sound Pressure ENISO 3744, 1mt	dB(A)	≤53			≤54			≤63			≤57
Height	mm	112			112			191			191
Width	mm	395			395			490			490
Depth	mm	395			395			490			490

CODE Version with EC fan + Active Probe (without UL certification)	M.U.	TSV22	TSV35
Nominal Voltage	V, ~	200...240, 1	200...240, 1
Nominal Frequency	Hz	50...60	50...60
Air Flow IP43/Type1		925	1870
Air Flow IP54/Type12		840	1700
Sound Pressure ENISO 3744, 1mt	dB(A)	≤56	≤57
Height	mm	112	191
Width	mm	395	490
Depth	mm	395	490