

Compact Protherm

Compact industrial air conditioners for electrical cabinets

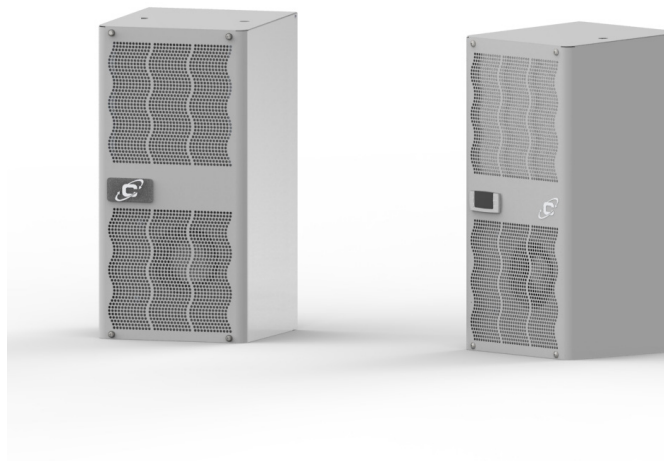


Complete and compact solution for electrical enclosures

Compact Protherm is the range of industrial air conditioners designed for installations where units with **small overall dimensions** in terms of width or height are required. The technical solutions available distinguish these compact air conditioners for electrical panels for **flexibility, reliability** and **efficiency**.

The range, although very compact in size, offers a wide choice of features for different market requirements:

- range up to 1000 W
- one cut-out for every model
- high efficiency
- extensive range of operations
- wide power supply range
- certifications suitable for the world market
- low noise



“Space optimisation without sacrificing reliability and efficiency”

Safety

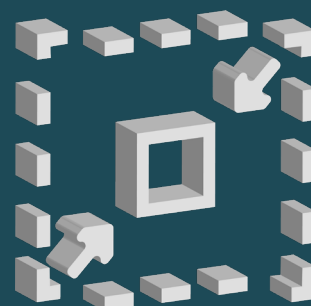
- Condensate dissipating device on the indoor range in order to reduce or eliminate the output condensate water without power consumption
- **IP54/55, Type 12/4** protection degree between air conditioner and electrical enclosure, which ensures protection against infiltration by dust or splashing water
- Hydrophilic evaporator for high efficiency and to prevent condensation drops from moving

FOCUS - Cooling capacity in compact dimensions

In industrial automation, production space is an increasingly valuable asset and there is a need to find solutions that combine high performance with optimised layouts, such as cabinets with a depth of 300mm/12.

The optimization of the space produces a higher density of the control electronic devices, getting worse the thermal conditions of the system, that must be further protected against the overheating in order to guarantee the continuity of the service.

Compact Protherm, an evolution of our bestseller, offers a Thermal Management solution suitable for placement on the side of all electrical cabinets up to 300mm deep, thanks to a width of only 280mm. In addition, the range also features a low height of 565mm, allowing it to be installed in electrical boxes integrated into machine tools.



Easy & fast installation

Positioning

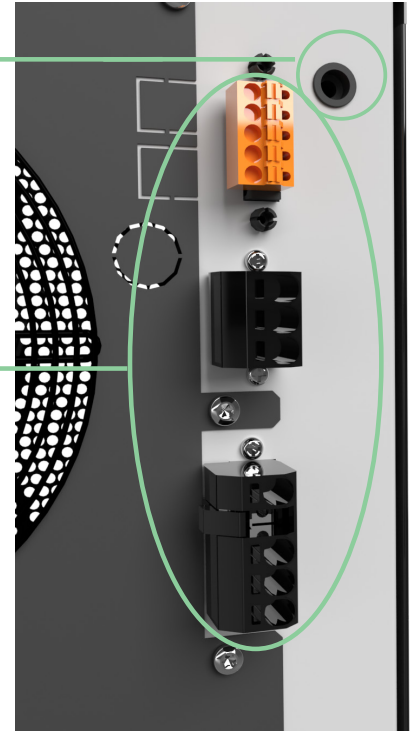
Two inserts to ensure the proper positioning of the unit

Quick Connections

Quick Connections for power supply and signals, **also** for **UL Listed units**

Testing

Quick start up and testing of the components via test function



“For all your indoor and outdoor applications, worldwide ”

Compact Protherm has an extensive range of operation, operating up to 55°C of external temperature, and set point up to 20°C (according to the model).

Application Practice

Cooling of the electrical enclosure in FOOD & BEVERAGE

In Food & Beverage the production lines must be washed and sanitized and for this reason they are entirely cleaned to remove any waste at the end of processing.

The electrical panels are made of stainless steel and with high degrees of protection to resist any corrosive agents and withstand washing with high pressure water jets.

Finally, in the food production line the available space is reduced and it is necessary to optimize the layout of the production process.

Cosmotec with the new Compact Protherm line offers a range of air conditioners that meet the needs of the Food & Beverage sector, thanks to a stainless steel coating and a high degree of protection IP55/Type4/4x.

Moreover, the dedicated layout and some available accessories, such as the roof inclined at 30°, avoid the deposit of dust and liquids on the roof, meeting the requirements of hygiene and safety. Finally, its compact dimensions allow it to be installed on all applications that require a small footprint. All this is accompanied by high performance and a great flexibility of power supplies and certifications, which make Compact Protherm suitable for export all over the world.



Technical Features

Main Features

- High efficiency
- Indoor and Outdoor applications
- Cooling capacity: 400 ÷ 1000 W
- Electronic board XCB + display
- Quick electrical connections
- Condensate evaporator device (CNE Models)
- General alarm and remote enable contacts
- Sequencing and modbus (with specific accessories)
- SEM and SEM2 functions (with specific accessory)
- Electrical heater (Models CNO 230V-400/460V, 115V on request)
- Certifications: CE, EAC, UL Listed

Options

- Special Color
- Stainless steel 304/316 housing
- Protective treatment on the condenser
- Electrical heater (CNO models)
- Remote Probe

CODE	M.U.	CNEo4 - CNOo4				
Nominal Voltage	V, ~	230 ,1	115 ,1	400 ,2	460 ,2	
Nominal Frequency	Hz	50	60	60	50	60
Cooling Capacity L35L35	W	455	495	455	450	490
Cooling Capacity L35L50	W	340	385	335	335	380
Absorbed Power L35L35	W	205	220	255	205	220
Sound Pressure	dB(A)	55	55	55	55	55
Height	mm	565	565	565	565	565
Width	mm	280	280	280	280	280
Depth	mm	220	220	278	278	278

CODE	M.U.	CNEo7 - CNOo7				
Nominal Voltage	V, ~	230 ,1	115 ,1	400 ,2	460 ,2	
Nominal Frequency	Hz	50	60	60	50	60
Cooling Capacity L35L35	W	660	670	625	645	655
Cooling Capacity L35L50	W	450	490	460	440	480
Absorbed Power L35L35	W	350	360	335	350	360
Sound Pressure	dB(A)	55	55	55	55	55
Height	mm	565	565	565	565	565
Width	mm	280	280	280	280	280
Depth	mm	220	220	278	278	278

CODE	M.U.	CNE1o - CNO1o				
Nominal Voltage	V, ~	230 ,1	115 ,1	400 ,2	460 ,2	
Nominal Frequency	Hz	50	60	60	50	60
Cooling Capacity L35L35	W	975	1075	950	950	1050
Cooling Capacity L35L50	W	750	830	700	745	825
Absorbed Power L35L35	W	480	530	555	480	530
Sound Pressure	dB(A)	58	58	58	58	58
Height	mm	565	565	565	565	565
Width	mm	280	280	280	280	280
Depth	mm	278	278	278	278	278

Accessories

- Air Filter (CNE)
- Air Baffle (CNE)
- Keypad (CNO)
- Sequencing cable
- Modbus serial port
- IP55
- Rubber caps
- 30° Sloped roof

